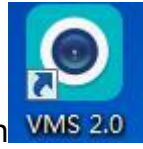

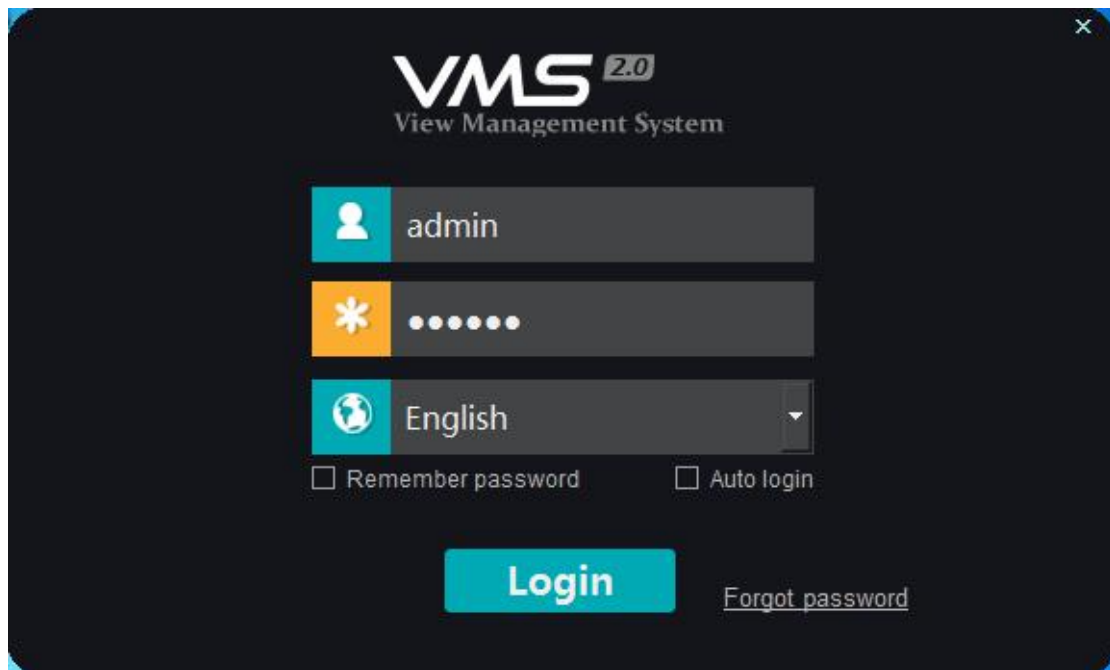


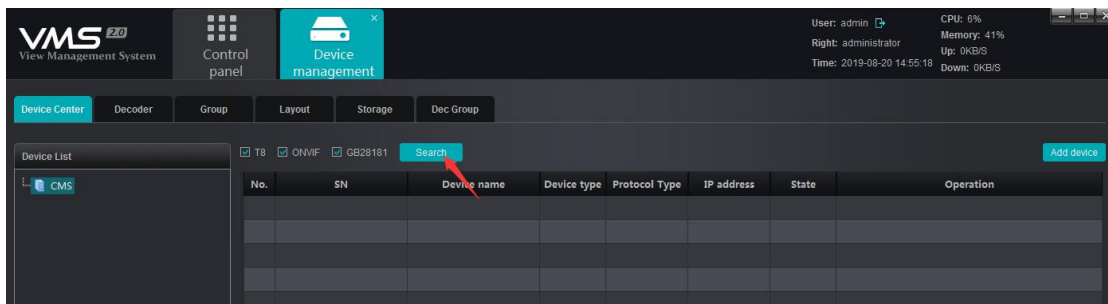
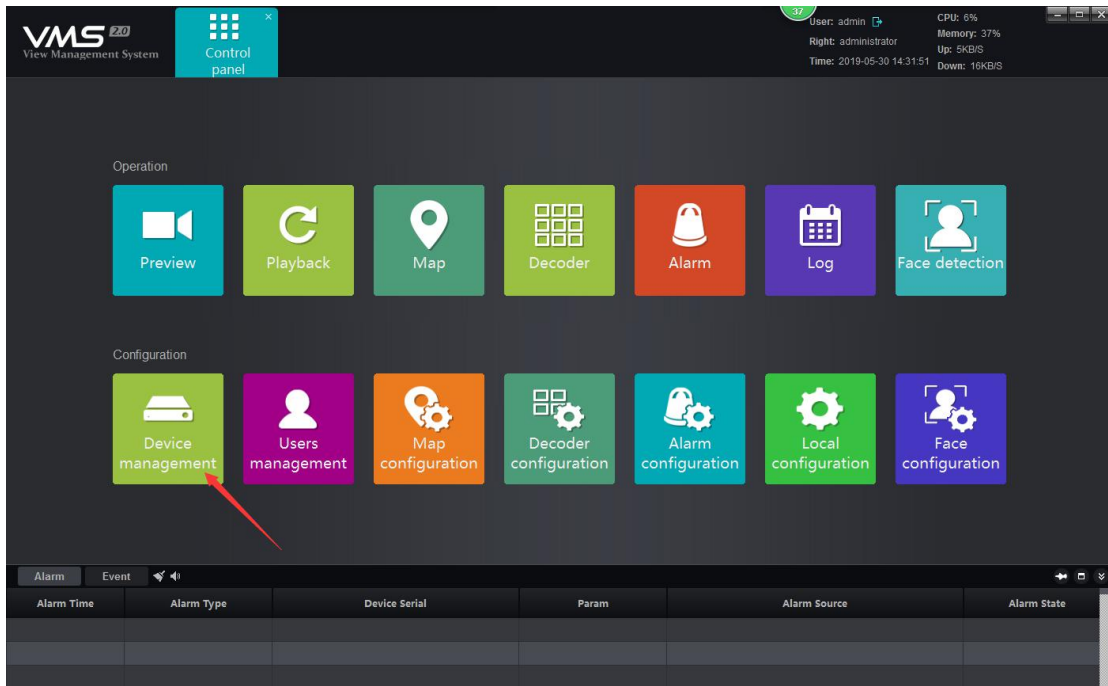
VMS Adding Device Operating Method



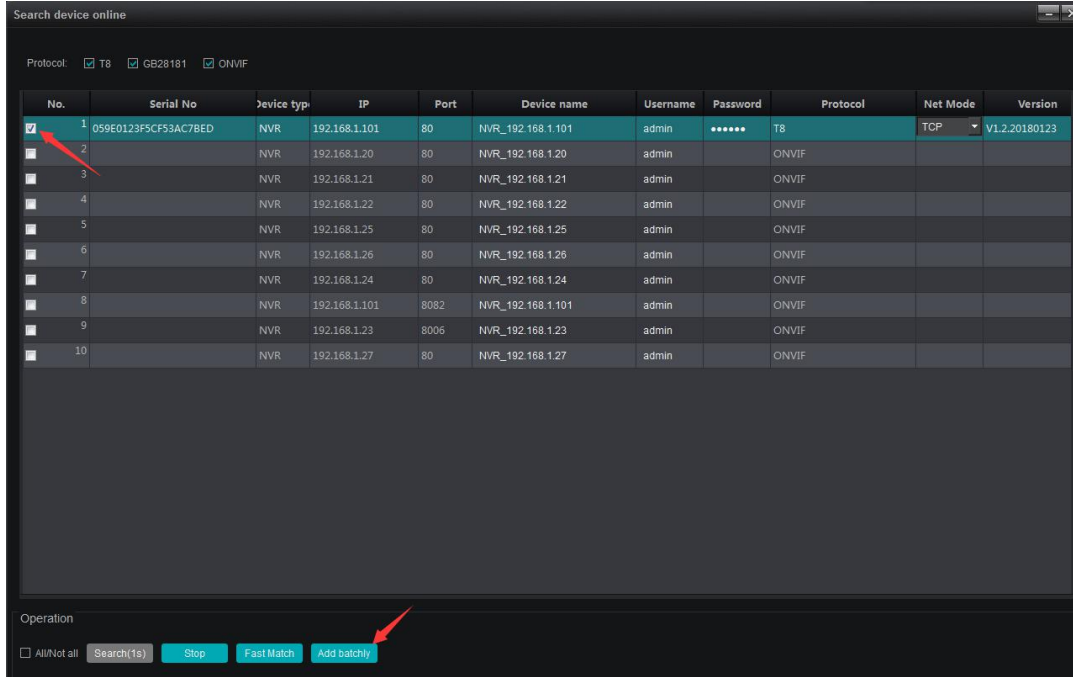
1. double-click left mouse button , open the VMS software.
2. Login, Username: **admin** Password: **123456** (shown in the screenshot below).



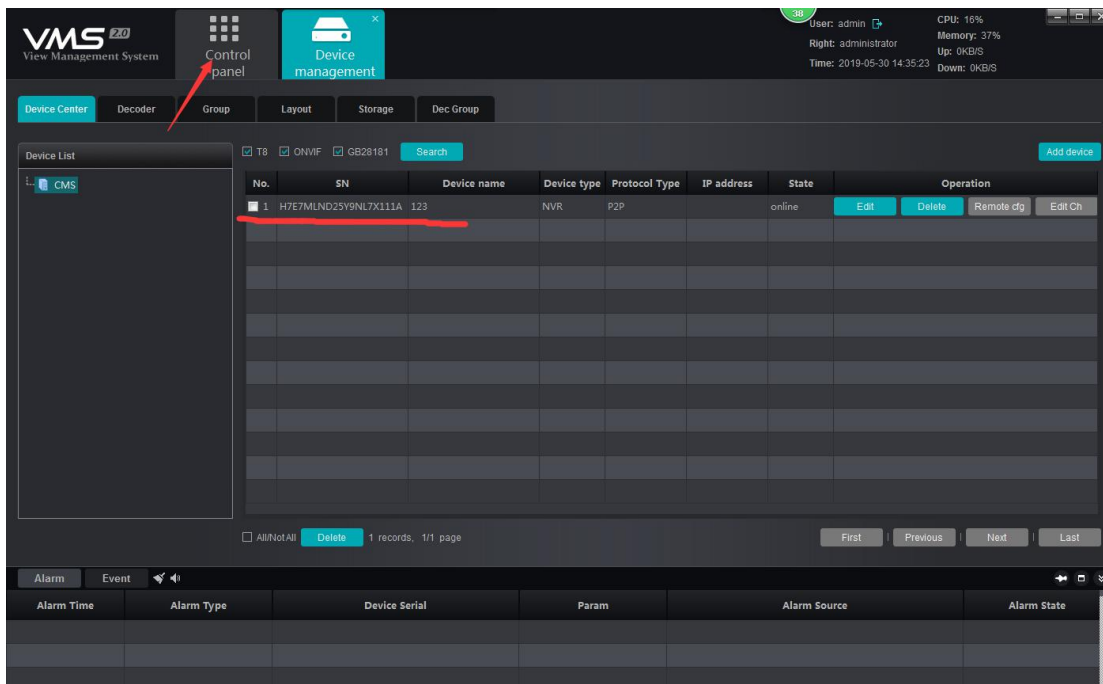
3. Click "Device management"----"Search" (shown in the screenshot below).

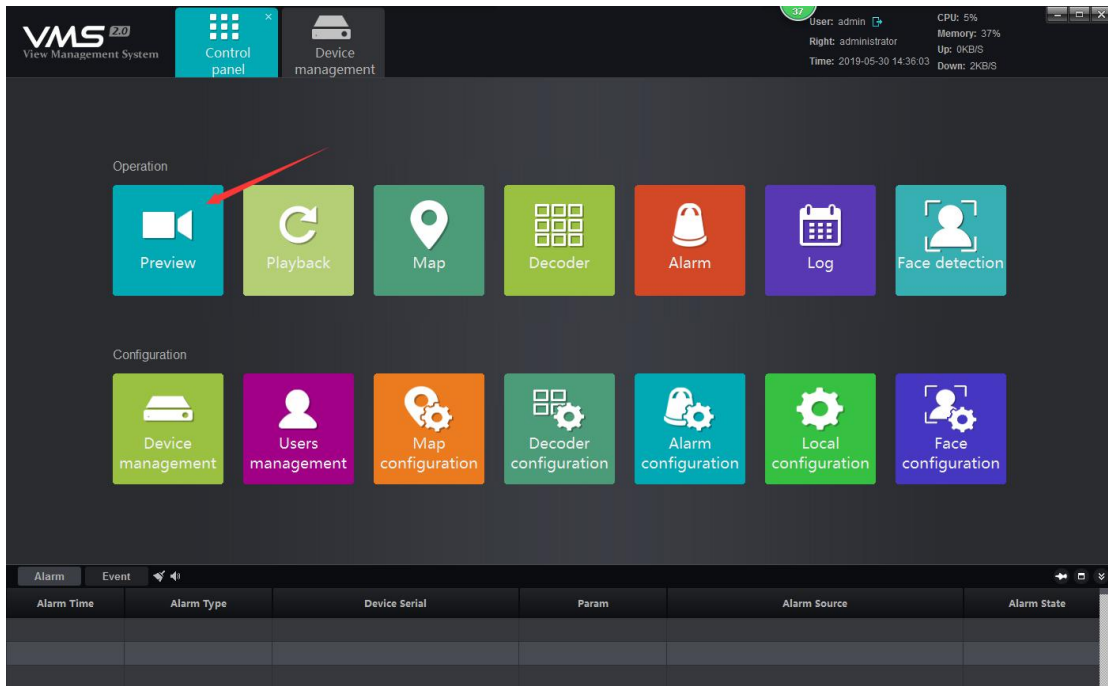


4. Check the devices you want to add, wait for the search to complete, click “add batchly” (shown in the screenshot below).

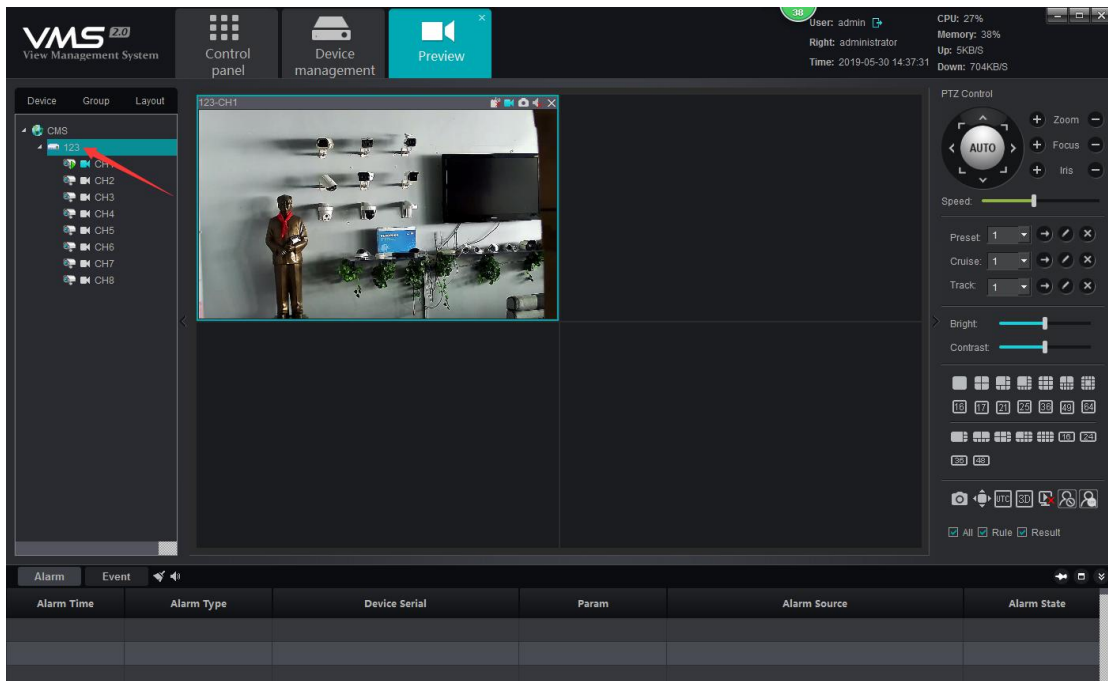


4. After add the device, click control panel — preview (shown in the screenshot below).





5. Click the device in the left, double click channel name then you can browse video. Also, you can right-click the device name, choose open all of them. (shown in the screenshot below).



VMS 4.0
View Management System

Control panel | Device management | Preview

User: admin | Right: administrator | Time: 2019-05-30 14:38:51
CPU: 38% | Memory: 40% | Up: 8KB/S | Down: 1MB/S

Device | Group | Layout

- CMS
 - Open all main stream
 - Open all sub stream
 - Close all preview
 - Open record
 - Open intercom
 - Refresh
 - CH7
 - CH8

123-CH1 | 123-CH2 | 123-CH3 | 123-CH4

NO VIDEO | **NO VIDEO**

PTZ Control

- AUTO
- Zoom
- Focus
- Ins
- Speed
- Preset: 1
- Cruse: 1
- Track: 1
- Bright
- Contrast
- Grids: 10, 17, 21, 25, 28, 32, 36, 40, 44, 48, 52, 56, 60
- Icons: Camera, PTZ, SD, Person, Alarm
- Checkboxes: All, Rule, Result

Alarm | Event

Alarm Time	Alarm Type	Device Serial	Param	Alarm Source	Alarm State