

IPC Use Manual

1.2

Special Statement

The product is subject to the actual product, the manual is for reference only. The manual and program will be updated in real time according to the product. There will be no notice of update in this manual.

Operation preparation:

Power the camera, and use network cable to connect cameras with computer in the same LAN. Make sure the camera and the computer are in the same IP segment.

1:Browser login Interface

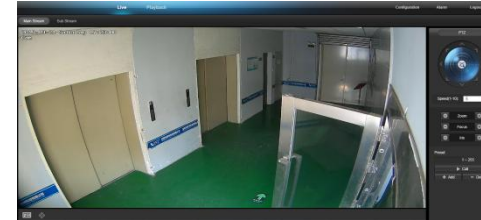
Enter the IP address of the device in the Chrome browser (the default IP is 192.168.1.123; Username is admin; Password is 123456) and enter the login interface as shown:



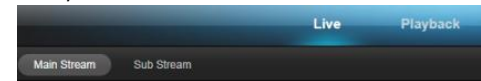
(Note: First login by IE browser, you need to install plug-in. Please connect the device with network, and follow the steps.)

2:Live Preview

After the login is successful, enter the real-time preview interface as shown:



2.1 Upper left side of interface, click to change Main/Sub Stream as shown

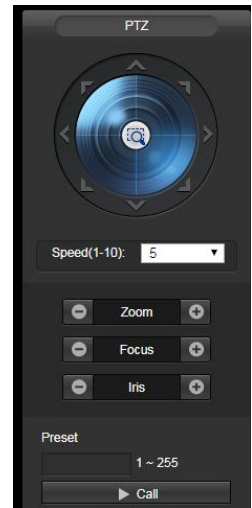


2.2 Interface bottom left is Widescreen/standard preview and Full Screen Preview as shown



2.3 PTZ

Right side is the PTZ control interface, Click PTZ camera rotation、ZOOM-、ZOOM+, FOCUS. And can set and Call PTZ camera's Preset point (Shown as right picture).



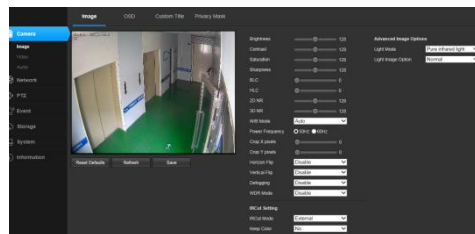
2.4 Configuration

Upper right side of interface, click Configuration, enter Parameter setting interface, Here is the alarm interface (show as below)

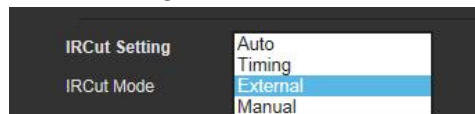


3:Configuration

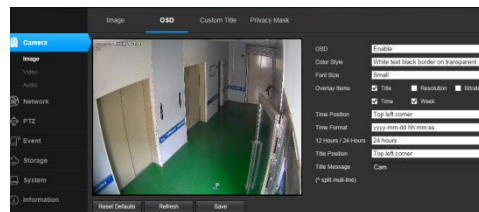
3.1 Camera Subdirectory, Image, Sets Cameras' Brightness/Contrast/Saturation/Sharpness/WDR, etc, as shown below,



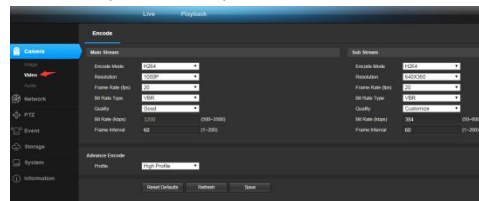
IRCut Setting, change colorful night vision to be black and white, pls choose External. If you want colorful night vision, then choose Auto.



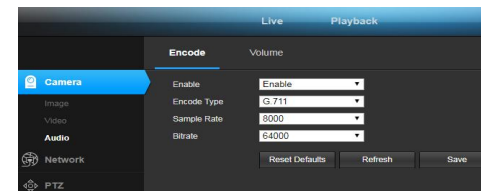
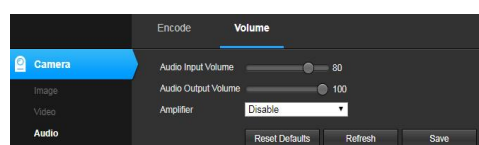
3.2 OSD can change name and date location, as shown



3.3 VIDEO, can change video's encode format, resolution, frame rate, etc. as shown:

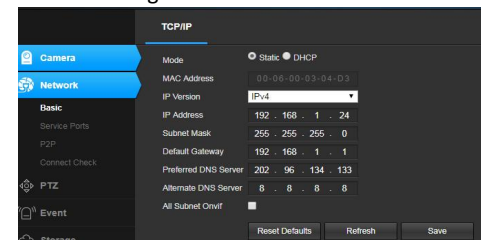


3.4 Audio, can change volume and audio encode format. as shown:



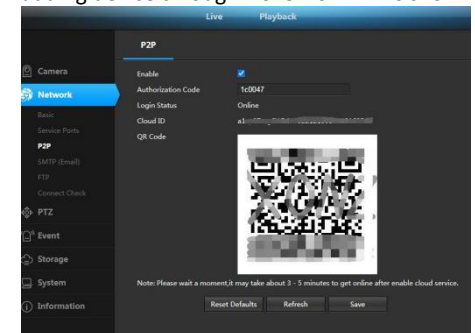
4:Network

4.1 Basic, set and change camera's IP address, DHCP (auto get IP address)



4.2 Service Ports, Open and close ONVIF/RTSP protocols)

4.3 P2P, Default factory settings not open. When open it, then can watch video remotely by adding device through AC18Pro APP. As shown:

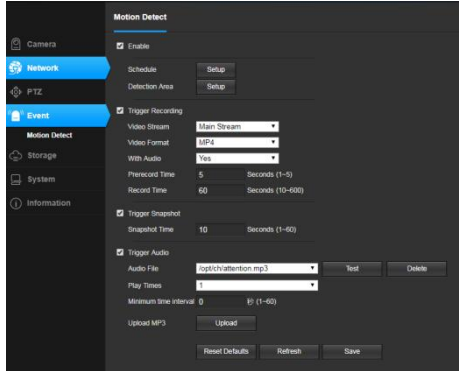


(Note: Authorization Code, Please use the authorization code generation tool and enter the camera serial number to obtain the authorization code)

(Note: Remote addition requires Login Status to display Online. If the display is not online, please check the network.)

5:Event

Motion Detect, can set motion detection area and alarm mode. (Default not open) as shown:



6:Storage

Can set language, user, time, upgrade, restore factory and other operations

7:Information

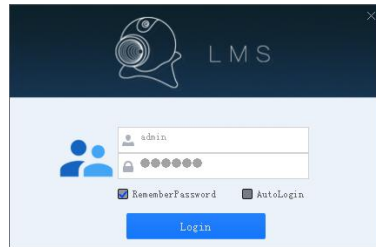
Version, can check device version.

8:IP Configuration Method on PC

8.1 On the desktop, double click LMS



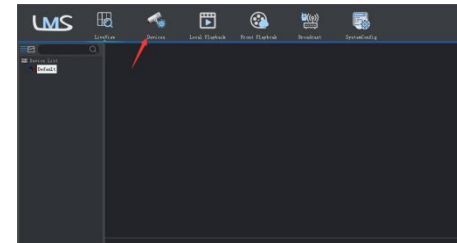
(LMS) to start software. As follow:



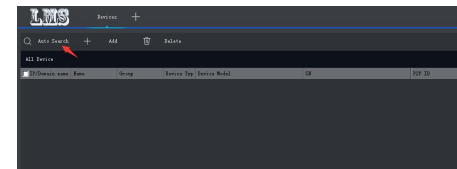
LMS the default username is admin, password is 123456.

(Note: LMS and the authorization code generation tools can be downloaded on company website.)

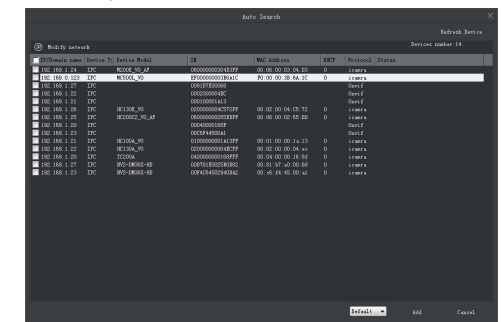
8.2 After login, click “Devices”, enter the device add screen. (As follow:)



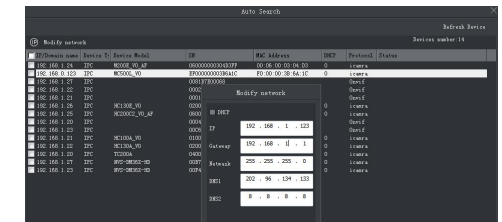
Click “Auto Search”



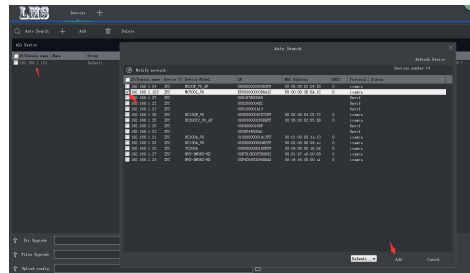
When search IP address, left click the mouse you need to modify IP, then click “Modify Network” as follow:



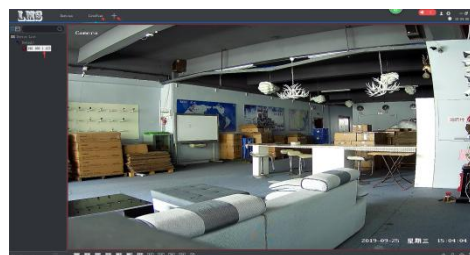
Modify IP, then click OK. as follow:



8.3 After modify, you can add device directly. as follow: :



Back to LiveView screen, Drag IP to video window to browse real-time video. as follow:

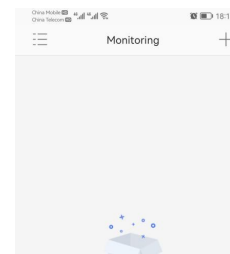


9:APP add device

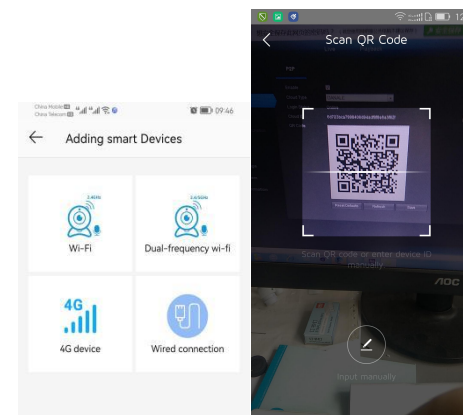
1: Mobile search “VideoLink” and download APP. Or scan the QR code below to download it

2: Open APP. If there is no account, click to register for free first

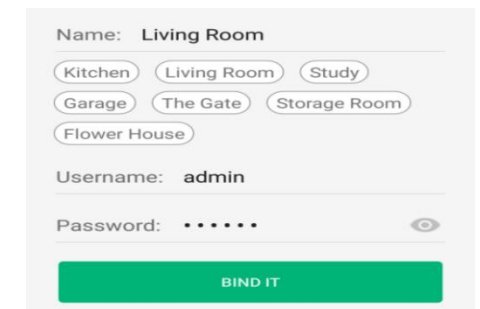
After registration, Click “+” add devices.



3: Click Wired Connection to add, scan the P2P interface QR code to add device, If mobile wifi and camera are in the same LAN, you can enter WiFi password directly, click) NEXT add.



4.Click "Add" Name your Device, Fill in to add the device to complete as shown:



5. Click on the added device to view the video.

