

PC Wifi setting Use Manual

2.2

Special Statement

The product is subject to the actual product, the manual is for reference only. The manual and program will be update in real time according to the product. There will be no notice of update in this manual.

Operation preparation:

Power the camera, connect the camera and PC in the same Wifi router.

1:IP Configuration Method on PC



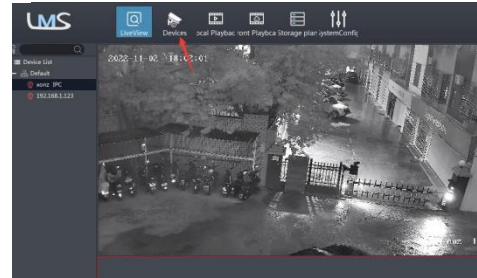
1.1 On the desktop, double click LMS (LMS) to start software. As follow:



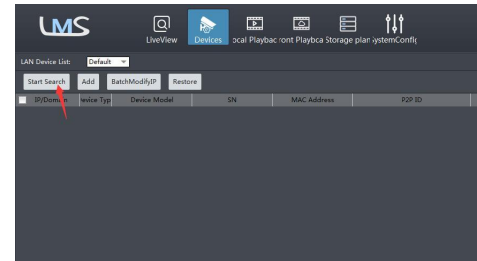
LMS the default username is admin, password is 123456.

(Note: LMS Download URL: <http://www.xonz-cctv.com/related-software-download/>)

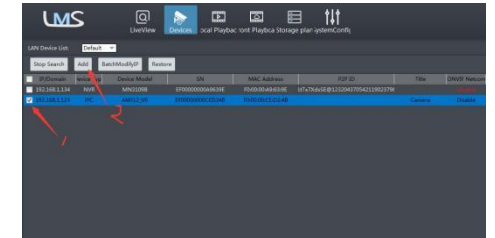
1.2 After login, click “Devices”, enter the device add screen. (As follow:)



Click “Auto Search”



1.3 you can add device directly. as follow:

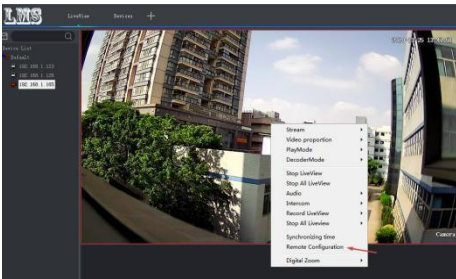


Back to LiveView screen, Drag IP to video window to browse real-time video. as follow:

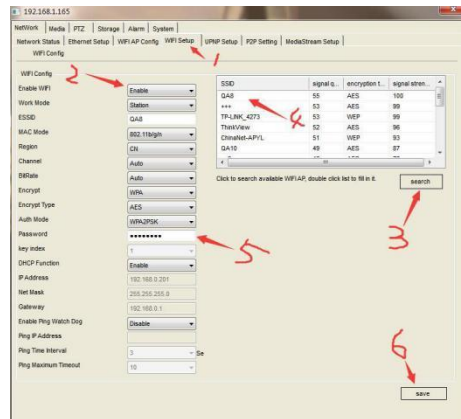


2: wifi setting

2.1 Move the mouse to the video box, right-click, and select from the pop-up menu “Remote Configuration”. As follow:



2.2 Enter the setting interface, choose wifi setup, follow the steps in the following picture:



(Search wifi, double click wifi name which you need to configure, enter wifi password and save.)

Wifi add success, click Network status, can check wifi connection status. As follow



(The QR code will be generated in the online state, and the device can be added to the mobile phone by scanning the code with APP)

After configuration, you can unplug the network cable, re add the device to view, or use app to view.

3:Media

3.1 Camera Subdirectory, Video Capture, Sets Cameras' IRCUT Setting/Brightness/Contrast/Saturation/Sharpness/WDR, etc, as shown below,

