

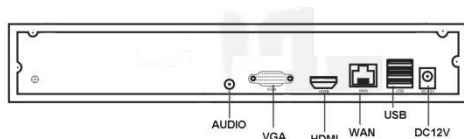
6 Series NVR User Manual

2.2

Special Notice:

The product is subject to the actual product.
The manual is for reference only.

1.NVR ports



DC12V——Connect 12V2A power supply.

USB ——Connect mouse and USB disk.

WAN——Configure network and connect wifi router.

HDMI——Connect monitor.

VGA——Connect monitor.

AUDIO——Connect headphone or speaker.

2. Install hard disk

- 1) Rive the screws on NVR, remove NVR panel, connect the hard disk network cable and power cable with NVR. As below:



- 2) Aim at the holes at the bottom of NVR, fix hard disk with screws, cover the panel.

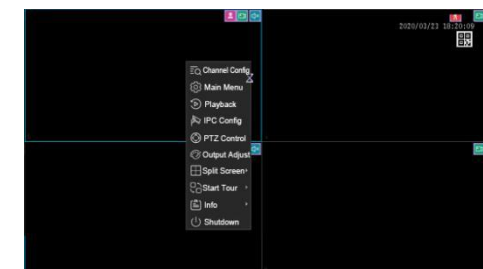


3. Connection and login

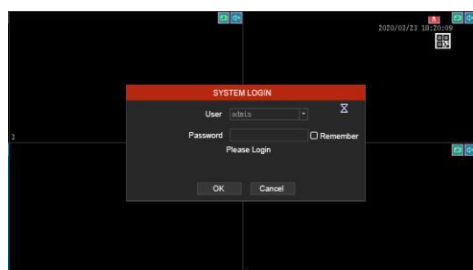
- 1) Power the device, Boot up

- 2) Login

After open devices, right click your mouse, show a small menu as below, click any option will show the login window,
Default user name: **admin**. Password: **Null**



Small menu



Login window

4. Small menu description

- 1) Channel Config——add device
- 2) Main menu.
- 3) Playback——Playback timing video and alarm video.
- 4) IPC Config—— Set camera name, motion detection, humanoid alarm, video coding, audio, restart cameras, etc. (ONVIF parts cannot set).
- 5) PTZ Control——Operate PTZ devices (Need camera support)

- 6) Output adjust——Adjust the brightness, saturation, contrast, tone, volume, etc.

- 7) Split Screen——1/4/6/8/9.

- 8) Start Tour——single or multi screen round inspection.

- 9) Info——view system log, code stream statistics.

- 10) Shut down——NVR restore factory default setting, restart, etc.

5. Channel Config (Add devices)

5-1.Click Channel Config,Go to the add camera interface, Click Refresh,The device automatically searches for the IPC in the LAN, and double-clicks the searched IP address to add the IPC.

5-2.Different network segment devices can check ALL Networks, then search, click IP, click Modify IP to change to the same

network segment IP and then add.

(Notice: when add ONVIF camera, after add, then click modify, fill in cameras' user name and password) .

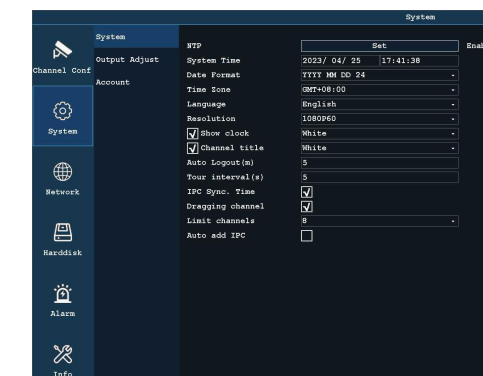


5-3.The added device can set up video coding, upgrade, OSD, audio setting, view IPC version, etc. (Note: private protocol front-end device)

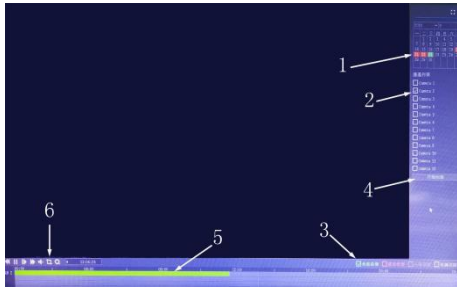
6.System

6-1.Can set the time, language, volume, user, etc;

6-2.Check Auto Add IPC, restart NVR, and automatically add all IPCs in the LAN when NVR starts up.



5. Video Playback interface



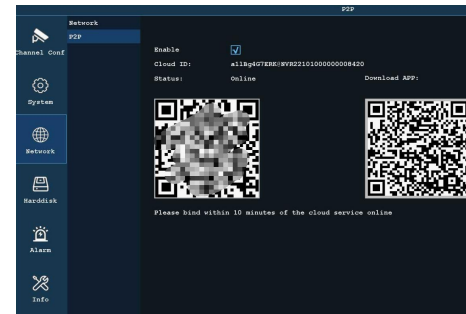
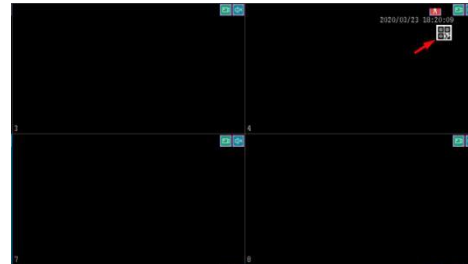
Operate steps:

1. Choose the date you want to playback.
2. Choose the channel.
3. Choose playback type.
4. Click playback.
5. Click the time bar.
6. Capture video, storage it into the USB disk.

7. APP connection

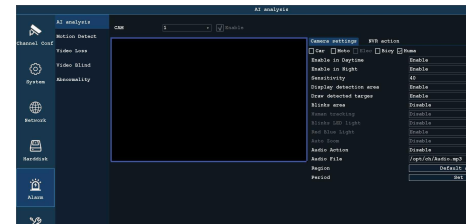
Download APP

Open the NVR, click upper right icon, pop up APP QR Code and UID Code, Scan the APP QR Code to download the APP. (Right is APP, left is UID) (Notice: If not show UID code, you should check the NVR whether it is connect network or not).



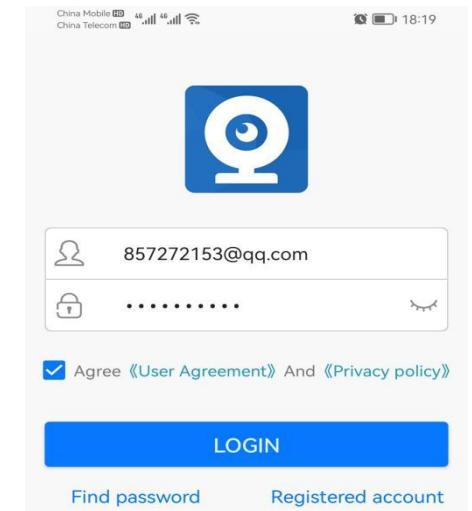
9: Alarm

Mobile detection, humanoid detection, vehicle shape detection can be set; intelligent analysis requires front-end support of private protocol



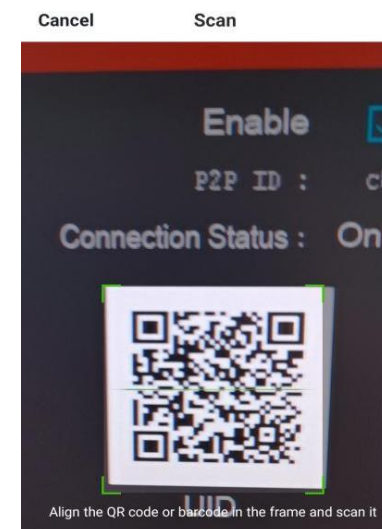
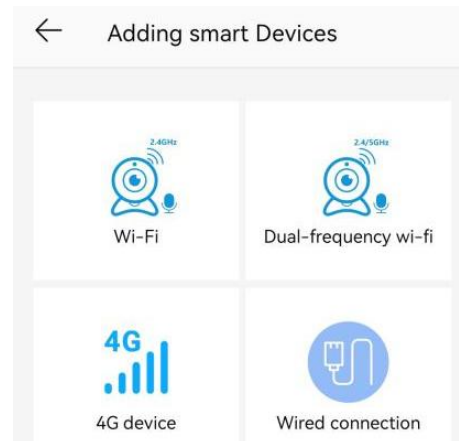
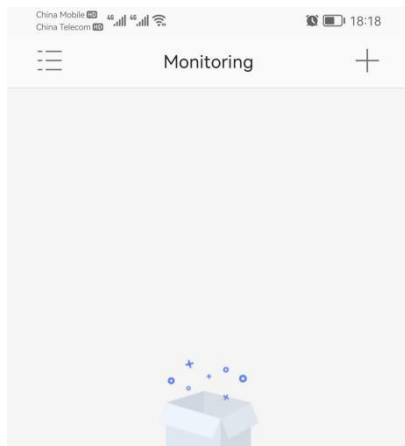
8. Add device by APP

- 1: Mobile search "AC18Pro" and download APP.
- 2: Open APP. If there is no account, click to register for free first as shown:

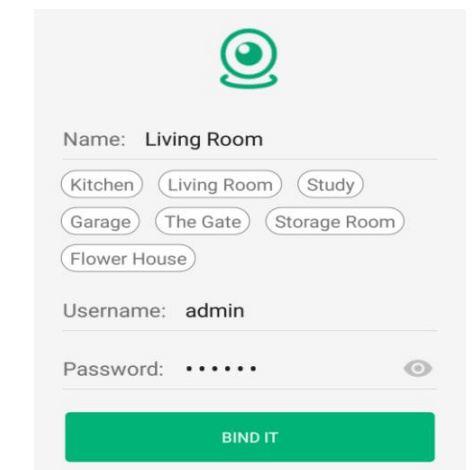


3: Add device

3-1: After log in, click "+" then, click: Wired connection, scan the NVR P2P interface UID QR code to add.



4. Click "Add" Name your Device, Fill in to add the device to complete as shown:



5. Click on the added device to view the video.